



## BXUV.U330 Fire Resistance Ratings - ANSI/UL 263

[Page Bottom](#)[Print-friendly version](#)[Questions?](#)[Previous Page](#)

## Fire Resistance Ratings - ANSI/UL 263

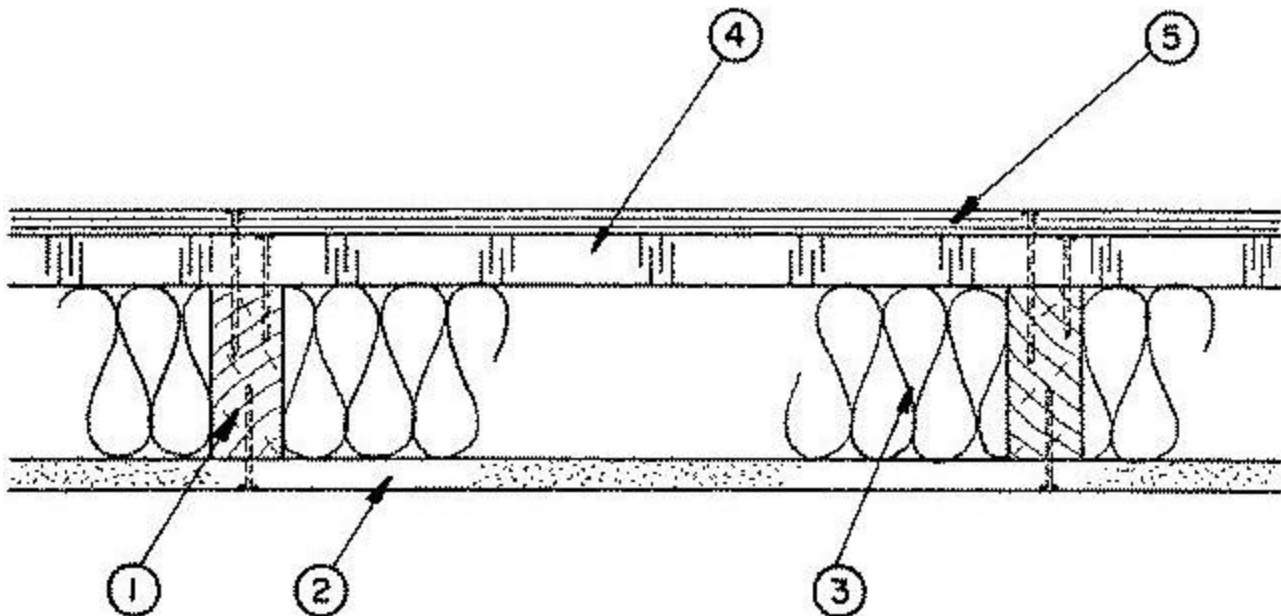
[See General Information for Fire Resistance Ratings - ANSI/UL 263](#)

Design No. U330

December 17, 2004

(Exposed to Fire on Interior Face Only)

Bearing Wall Rating — 1 HR.



1. **Wood Studs** — Nom 2 by 4 in., spaced 16 in. OC.

2. **Gypsum Board\*** — 5/8 in. thick (min) 4 ft wide bearing the ULI Classification Marking for Fire Resistance applied vertically. Attached to studs with 6d cement coated nails spaced 7 in. OC at the edges and in the field. Vertical joints located over studs. Joints covered with paper tape and joint compound. Nail heads covered with joint compound.

See Gypsum Board (CKNX) Category for names of Classified Companies.

**3. Batts and Blankets\*** — Min 3-1/2 in. mineral wool batts placed to fill cavity of wall.

See Batts and Blankets (BZJZ) Category for names of Classified Companies.

**3A. Fiber, Sprayed\*** — As an alternate to Batts and Blankets (Item 3) — Spray applied cellulose insulation material. The fiber is applied with water to completely fill the enclosed cavity in accordance with the application instructions supplied with the product. Nominal dry density of 3.0 lb/ft<sup>3</sup>.

**U S GREENFIBER L L C** — Cocoon stabilized cellulose insulation.

**4. Foamed Plastic\*** — 1 in. thick rigid polystyrene insulation attached to studs with 1-1/2 in. long galvanized roofing nails.

**THE DOW CHEMICAL CO**

**OC CELFORTEC INC**

**OWENS CORNING SPECIALTY &**

**FOAM PRODUCTS**

**4A. Foamed Plastic\*** — 1 in. thick rigid polyisocyanurate insulation attached to studs with 1-1/2 in. long galv roofing nails.

**THE DOW CHEMICAL CO** — Type Thermax

**5. Plywood Sheathing (Siding)** — Min 1/2 in. thick plywood applied vertically with vertical joints located over studs. Fastened to studs with 10d galvanized nails 6 in. OC at edges and 12 in. OC in the field.

**5A. Alternate Exterior — Hard board Paneling — Mineral and Fiber Boards\*** — Untreated panels nom 7/16 or 1/2 in. thick, 12 to 48 in. wide. Ship lapped panel sidings are fastened to framing members with 10d rust — resistant nails thru the lap spaced 6 in. O.C. vertically. Butted panel siding fastened to framing members with 10d nails 3/8 in. from edge spaced 6 in. O.C. vertically. Lap sidings fastened to framing members with 12d nails 3/8 in. from edges spaced 16 in. O.C. horizontally. (Aluminum joint molding as required for lap products).

**MASONITE CORP**

\*Bearing the UL Classification Mark

**Last Updated** on 2004-12-17

---

[Page Top](#)[Notice of Disclaimer](#)[Questions?](#)[Previous Page](#)[UL Listed and Classified Products](#)[UL Recognized Components](#)[Products Certified for Canada](#)

This page and all contents are Copyright © 2005 by Underwriters Laboratories Inc.®

The appearance of a company's name or product in this database does not in itself assure that products so identified have been manufactured under UL's Follow-Up Service. Only those products bearing the UL Mark should be considered to be Listed and covered under UL's Follow-Up Service. Always look for the Mark on the product.

UL permits the reproduction of the material contained in the Online Certification Directory subject to the following conditions: 1. The Guide Information, Designs and/or Listings (files) must be presented in their entirety and in a non-misleading manner, without any manipulation of the data (or drawings). 2. The statement "Reprinted from the Online Certifications Directory with permission from Underwriters Laboratories Inc." must appear adjacent to the extracted material. In addition, the reprinted material must include a copyright notice in the following format: "Copyright © 2005 Underwriters Laboratories Inc.®"